

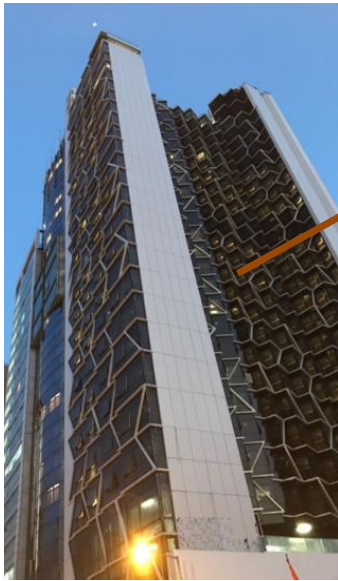


# 英皇娛樂酒店有限公司 Emperor Entertainment Hotel Limited

於百慕達註冊成立之有限公司 Incorporated in Bermuda with limited liability

## Hotels and Leasing Apartments in Hong Kong

### The Emperor Hotel in Wan Chai



👑 A 29-storey hotel with a gross floor area of approximately 115,700 ft<sup>2</sup>, which offers 299 guest rooms together with leisure, dining and parking facilities

👑 A signature hotel under "Emperor" brand in Hong Kong

*Golden Valley, a Cantonese & Sichuan cuisine in The Emperor Hotel, had been labelled as Michelin 1-star restaurant*

### The Unit Happy Valley in Happy Valley



21-storey composite building with 68 units

### The Unit Morrison Hill in Wan Chai



12-storey composite building with 18 units

### The Unit Soho in Central



25-storey composite building with 69 units



# 英皇娛樂酒店有限公司 Emperor Entertainment Hotel Limited

於百慕達註冊成立之有限公司 Incorporated in Bermuda with limited liability

## Hotels in Macau

### Grand Emperor Hotel in Macau Peninsula

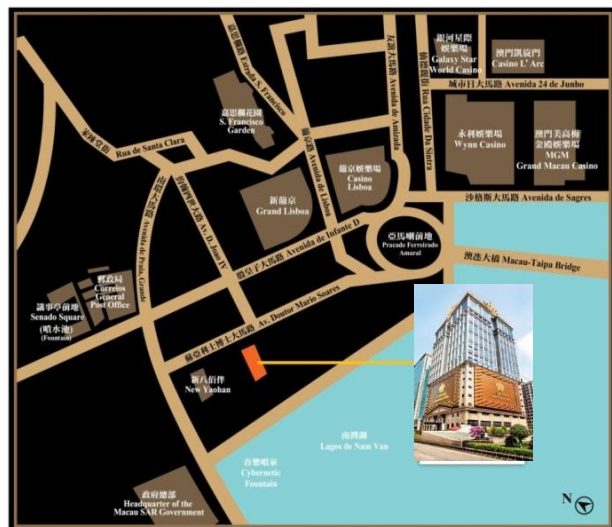


👑 Commenced in 2006, it is an award-winning hotel of 26 storeys with a gross floor area of approximately 655,000 ft<sup>2</sup> and 311 guest rooms



Lobby laden with 79 bars of 999.9 fine pure gold bars, each weighing 1kg

### Inn Hotel in Taipa, Macau



- 👑 A 17-storey hotel with total GFA of approximately 209,000 ft<sup>2</sup>, offering 285 guest rooms, swimming pool and spa
- 👑 Located at the heart of Taipa Island, Macau, it is adjacent to the popular tourist spots with guarantee traffic



# 英皇娛樂酒店有限公司 Emperor Entertainment Hotel Limited

於百慕達註冊成立之有限公司 Incorporated in Bermuda with limited liability

## Financial Summary

HK\$'000	FY2024/25	1H2024/25	1H2025/26
Total Revenue	836,955	407,909	<b>335,599</b>
<i>Hotels and Leasing Apartments</i>	331,339	154,860	<b>157,709</b>
<i>Gaming *</i>	505,616	253,049	<b>177,890</b>
Gross Profit	340,806	159,839	<b>105,777</b>
Fair Value (Loss) on Investment Properties	(371,670)	(263,892)	<b>(68,800)</b>
Net (Loss)	(248,078)	(225,686)	<b>(73,120)</b>
Basic (Loss) per Share	HK\$(0.16)	HK\$(0.15)	<b>HK\$(0.05)</b>

\* The gaming area has ceased operation since 31 October 2025

## Balance Sheet Position

HK\$'000	@31 Mar 2025	@30 Sep 2025
Non-current Assets	4,093,594	<b>3,982,163</b>
Current Assets	616,108	<b>588,668</b>
Current Liabilities	(284,052)	<b>(247,468)</b>
Non-current Liabilities	(119,401)	<b>(90,234)</b>
Gearing Ratio	Zero	<b>Zero</b>





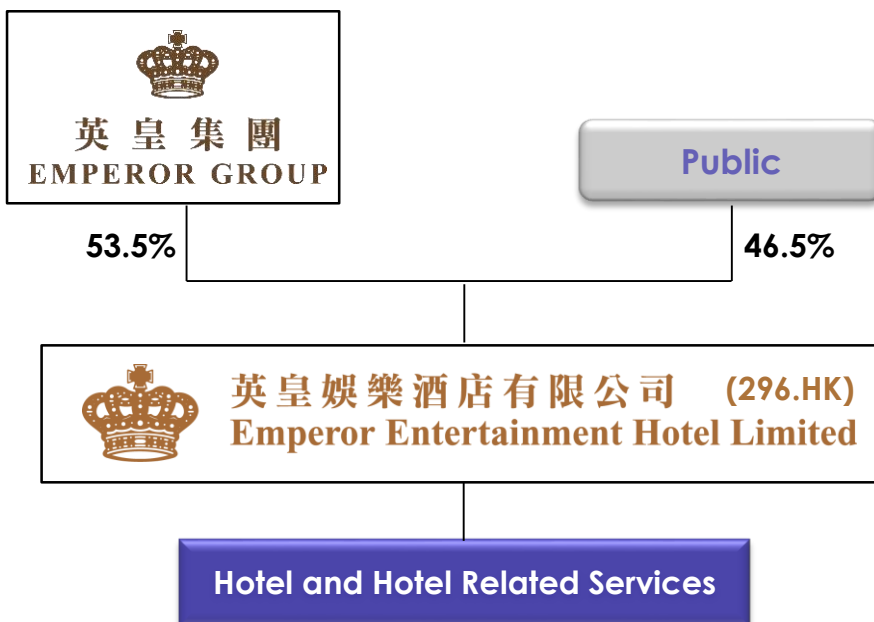
# 英皇娛樂酒店有限公司 Emperor Entertainment Hotel Limited

於百慕達註冊成立之有限公司 Incorporated in Bermuda with limited liability

## Outlook

- ❖ The number of visitors arrivals to Hong Kong and Macau maintained an upward trend. In light of the expanding middle class and increasing demand of leisure service, it fuels the growth of tourism and hospitality sectors
- ❖ Backing up by an enhanced transportation link and a comprehensive tourism development plan within the Greater Bay Area, it will further strengthen the position of Hong Kong and Macau as an international shopping destination and a global resort hub, respectively, in the long-run
- ❖ As Hong Kong has remained the key gateway to China's capital markets, it has been well received by business travelers and MICE, laying a solid foundation demand for hotel rooms and leasing apartments near central districts

## Corporate Structure



## Investor Relations Contacts

Anna Luk  
Group IR Director  
Direct Line: 852-2835 6783  
Email: [annaluk@emperorgroup.com](mailto:annaluk@emperorgroup.com)

Janice Au  
Group IR Manager  
Direct Line: 852-2835 6799  
Email: [janiceau@emperorgroup.com](mailto:janiceau@emperorgroup.com)